

416 Euclid



416

porch



3'4"

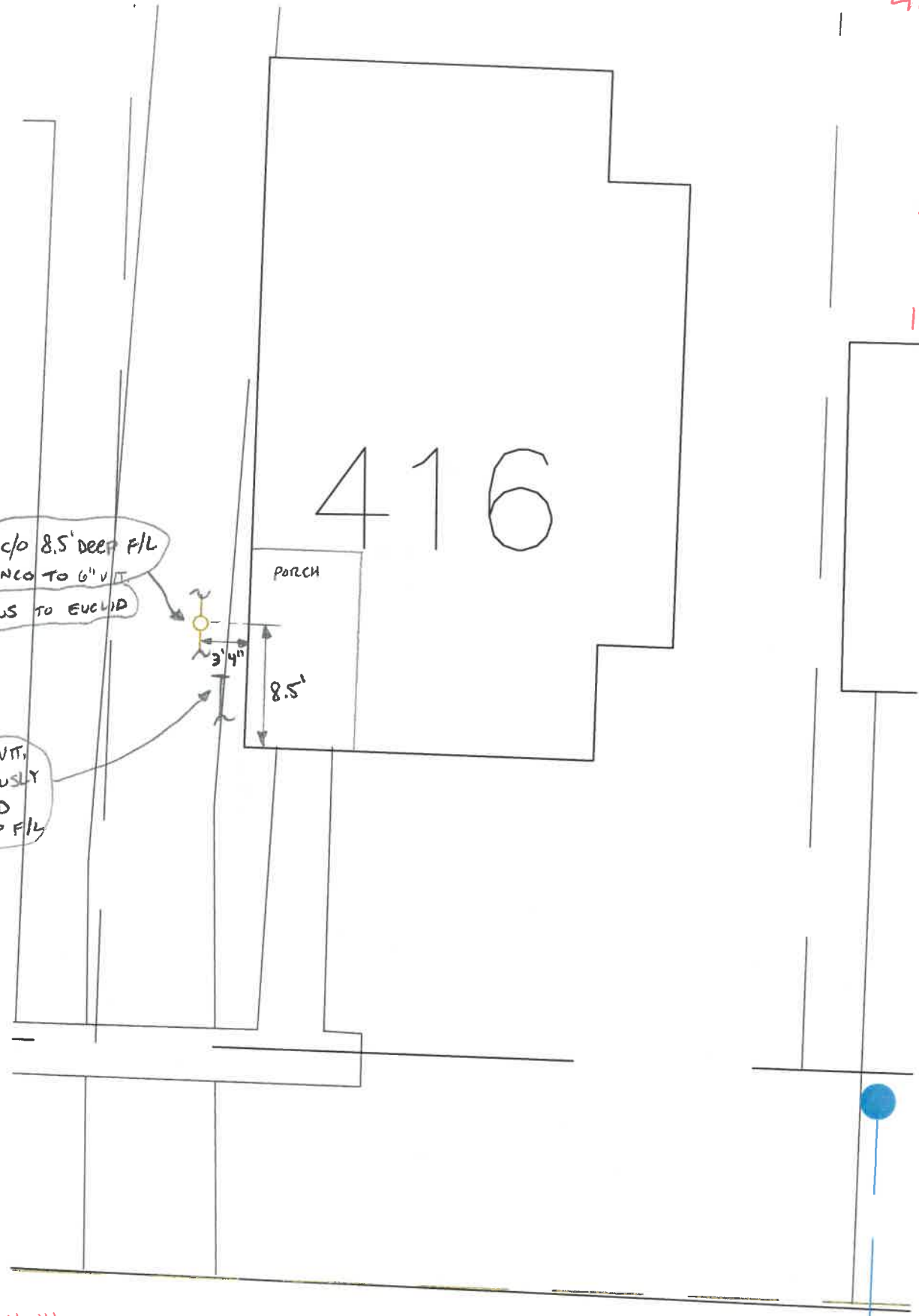
8.5'

6" c/p 8.5' deep F/L
FERRECO TO 6" V
FLOWS TO EUCLID

EX. 6" V/T,
PREVIOUSLY
CAPPED
6' DEEP F/L

DATE: 3-11-14
INSTALLED BY: TRESSLER PLUMBING
INSPECTED BY: MARTY GROSSLAND

EUCLID AVENUE



STONE
DRIVEWAY

north
↑

2-25-2014
RAE

416
EUCLID

SANITARY LATERAL 90' APPROX

TO CORNER MANHOLE
- 183'

121'
TO MANHOLE

MANHOLE
IN ROAD
BETWEEN 430 + 425

SANITARY MAIN